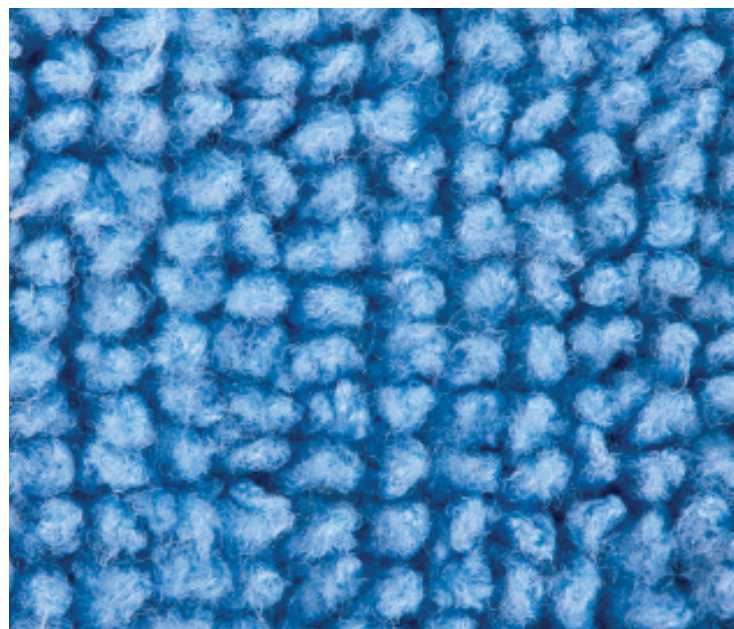


TEXTILE EXCHANGE:

2014 Annual Report



Textile Exchange

Textile Exchange (TE) is a global nonprofit organization that works closely with all sectors of the textile supply chain to find the best ways to minimize and even reverse the negative environmental and social outcomes created by this \$1.7 trillion industry.

Founded in 2002, our first successful collaboration was with organic cotton farmers, manufacturers, brands and retailers. We have since expanded our work to include other preferred materials such as recycled polyester, Lyocell, bio-based fibers, down and more.

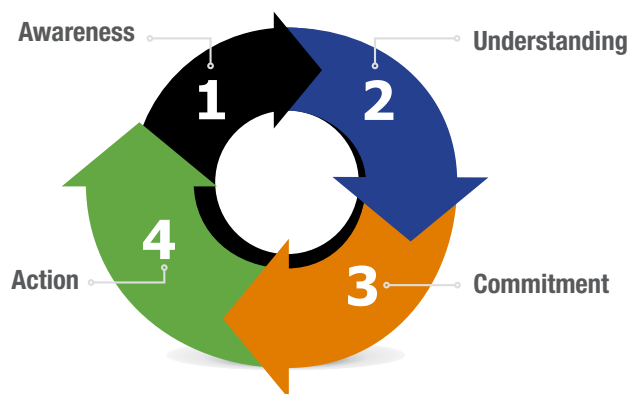
Our Members

Companies from more than 25 countries have joined TE because they want to be more sustainable. Our members include textile suppliers, service providers and manufacturers, brands and retailers, and farmers. 2014 membership revenue grew to \$454,500.00, up from \$415,348.71 in 2013.

2014 at a Glance

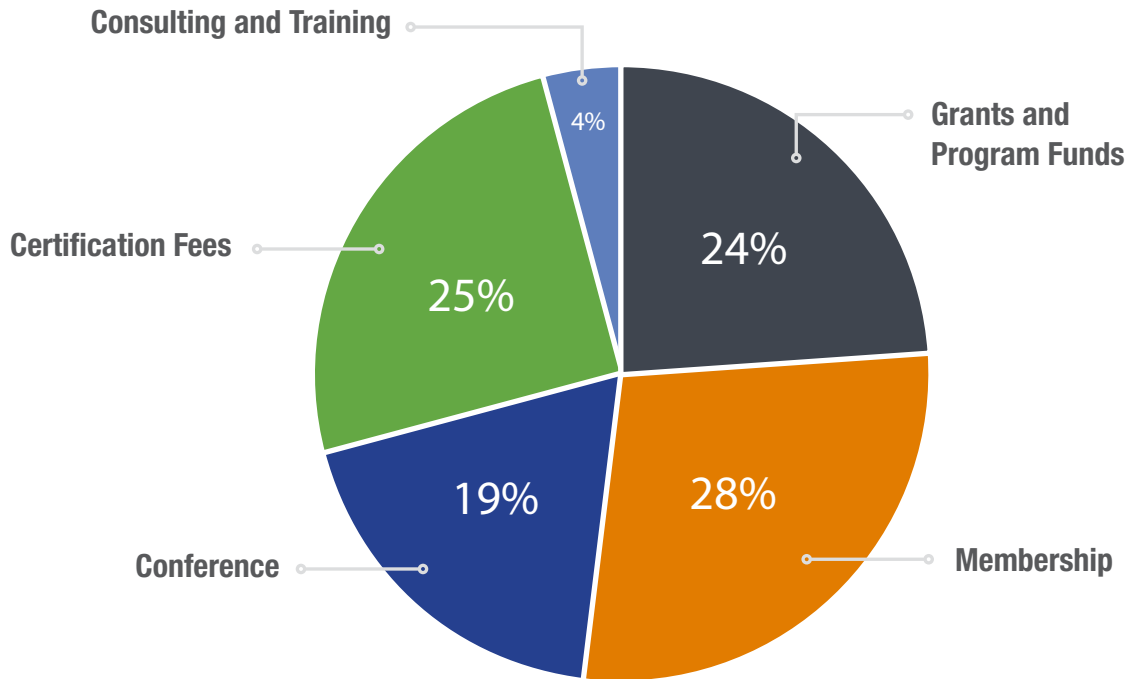
2014 was an important year for Textile Exchange. The organization underwent an extensive strategic review that helped to define and narrow the overall scope of work. All work produced by TE now falls under these three core platforms:

- 1. MATERIALS.** Both brands and manufacturers rely on this data when making informed decisions about which fibers to use and in communicating a product's environmental attributes to consumers.
- 2. INTEGRITY.** Without integrity or verification of claims along the full supply chain, sustainability efforts fall short and put companies at risk. We make sure that the work members do toward textile sustainability is verifiable so they can create meaningful change within the industry.
- 3. SUPPLY CHAIN.** When a company is familiar with its supply chain, it is empowered to find the most sustainable and ethical means to produce a product. As brands begin to align environmentally and socially preferred materials and processes, their entire sustainability strategy is strengthened.



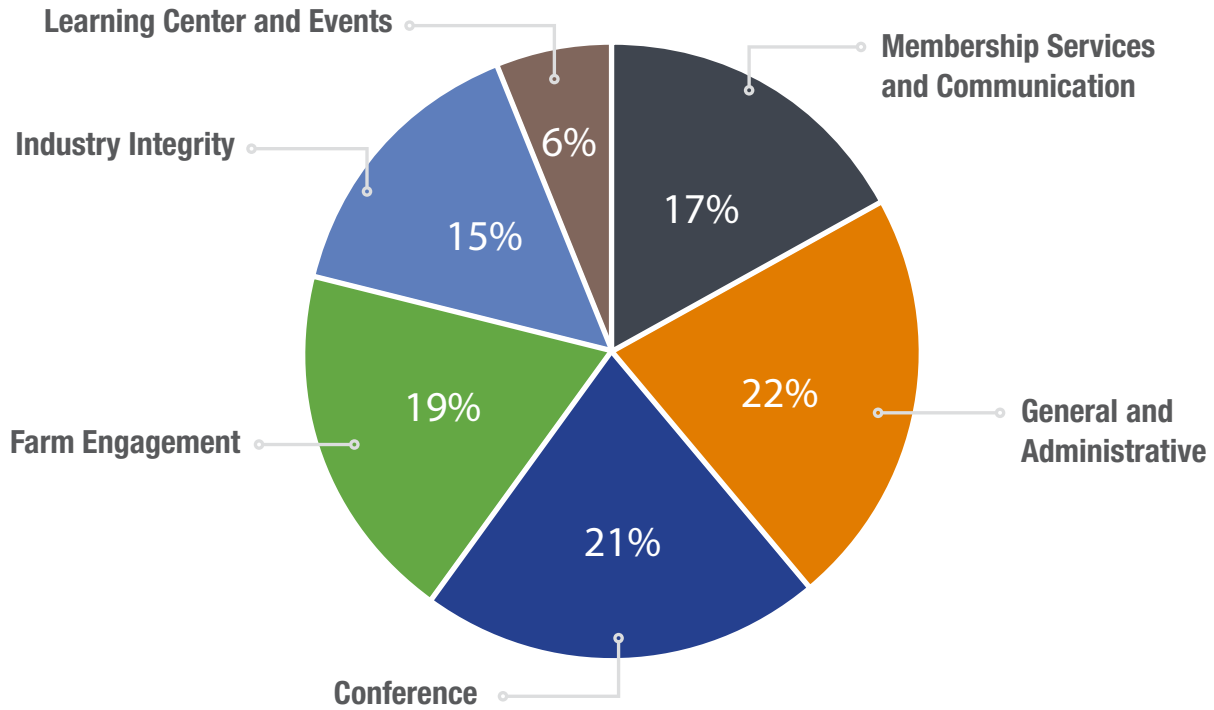
Textile Exchange operates on a core continuum for our members and the textile industry as a whole. This continuum starts with awareness, which creates understanding, leading to commitment and eventually, action.

2014 Income Sources



	2014
Grants and Program Funds	\$392,747.14
Membership	\$454,500.00
Conference	\$309,375.00
Certification Fees	\$398,850.00
Consulting and Trainings	\$63,418.76
Other	\$5,166.59
	\$1,624,057.49

2014 Expenses by Class



	2014
Membership Services and Communication	\$236,590.76
General and Administrative	\$300,033.15
Conference	\$300,406.82
Farm Engagement	\$271,372.39
Industry Integrity	\$221,573.90
Learning Center and Events	\$89,341.99
Fundraising	\$14,620.80
	\$1,433,939.81

Note: The negative balance on income is due to restricted program dollars received in a prior fiscal year and delivered in 2014.

Senior Advisory Team

La Rhea Pepper, Managing Director, Textile Exchange
Anne Gillespie, Director of Industry Integrity
Liesl Truscott, Director of TE Europe & Farm Engagement
Jeff Wilson, Director of Business Value Strategy and Development

Staff

Hanna Denes, Farm Program Manager
Ashley Gill, Integrity Specialist
Terry Hyde, Executive Assistant
Brittany Moore, Communications & Events Coordinator
Lee Tyler, Operations Manager
Sharon Whitley, Financial Administrator
Donna Worley, Communications & Events Manager
Amber Young, Financial & Program Coordinator

Governing Board

Elayne Masterson, Chair, Esquel Group
Tricia Carey, Vice-Chair, Lenzing
Jerry Wheeler, Secretary, EcoCentric Brands
Ryan Thompson, Treasurer, Patagonia
Marci Zaroff, Member at Large, CMSO Portico Brand Group
Mitsuya Inagaki, Kowa Company
Cheryl Millard-Nutt, Nike Inc.
Adam Mott, The North Face
Mark Prosé, Control Union
Shona Quinn, Eileen Fisher, Inc.
Orlando Rivera, Bergman RiveraSAC
Andreas Streubig, Otto Group
Ada Suneson, Target

Advisory Council

John Cable, JPKE Supply Chain Specialists
Simon Cooper, CSR Consultancy, Ltd.
Eric Ducoin, Sustainable Cotton Consultancy
Eraina Duffy, Nike Inc
Mike Farid, NatureUSA

Advisory Council Cont.

Sevilla Granger, Coyuchi
Edward Hertzman, Sourcing Journal
Dr. Charu Jain, Burberry
Fanny Liao, Far Eastern
Sophie Mather, bio8tion
Dr. Samuel Moore, Hohenstein Institute
Andrew Olah, Olah, Inc.
Sreeranga Rajan, Dibella
Darlene Vogler, TOCMC
Alison Ward, CottonConnect
Eric Wilmanns, Brown & Wilmanns

Ambassadors

Nicole Bassett, Sustainability in Review, USA
Alfonso Lizarraga Travaglini, Latin America
Karla Magruder, Fabrikology International, USA
Prabha Nagarajan, India
Silvère Tovignan, Africa

Europe Board of Trustees

Shreyaskar Chaudhary, Pratibha Syntex
Mani Chinnaswamy, Appachi Cotton Co/Ethicus
Dr. Helen Crowley, Kering
Mahesh Ramakrishnan, Arvind Limited
Ben Ramsden, Pants to Poverty
Heinrich Schultz, OrganiMark
Aydin Unsal, Egedeniz Textiles A.S.
Tong Yeung, Mecilla

Serving as Advisory Board to TE Europe:

Simon Cooper, Eric Ducoin, Sevilla Granger, Edward Hertzman, Shona Quinn, Alison Ward